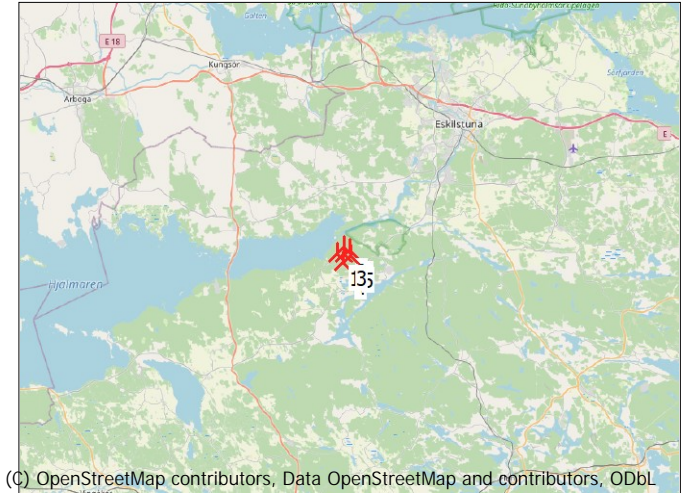
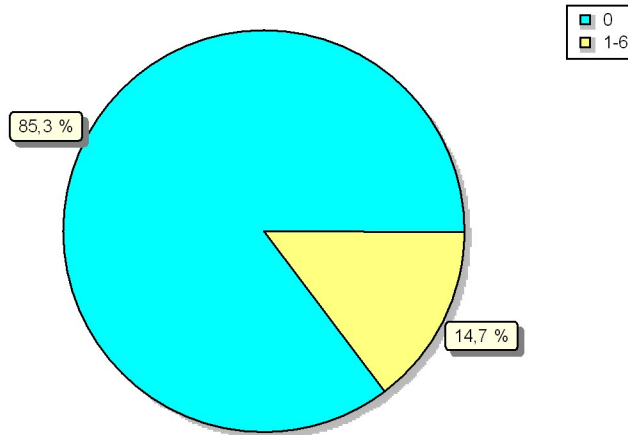


## ZVI - Standard ZVI summary

Calculation: 221110\_Med\_skog

Area with specific number of WTGs visible



Scale 1:750 000

New WTG

### Assumptions for ZVI calculation

Center for calculation	Swedish UTM 33-SWEREF99 (SE) East: 574 578 North: 6 569 291
Width of calculation area	38 210 m
Height of calculation area	36 658 m
Calculation step	25 m
Eye height	1,5 m
Calculation area	138 108 ha
WTG Calculation height	Total height
Obstacles used in calculation	0
DHM object	Height Contours: CONTOURLINE_ONLINEDATA_0(1).wpo (1)
Area object(s) used in calculation	Merged forest data SkogligGrunddata2021lev2+SLU2015
Height of background area type	0,00 m
No grid objects used in calculation	
New WTGs used in calculation	6
Existing WTGs used in calculation	0

No maximum distance to WTG

### ZVI Results

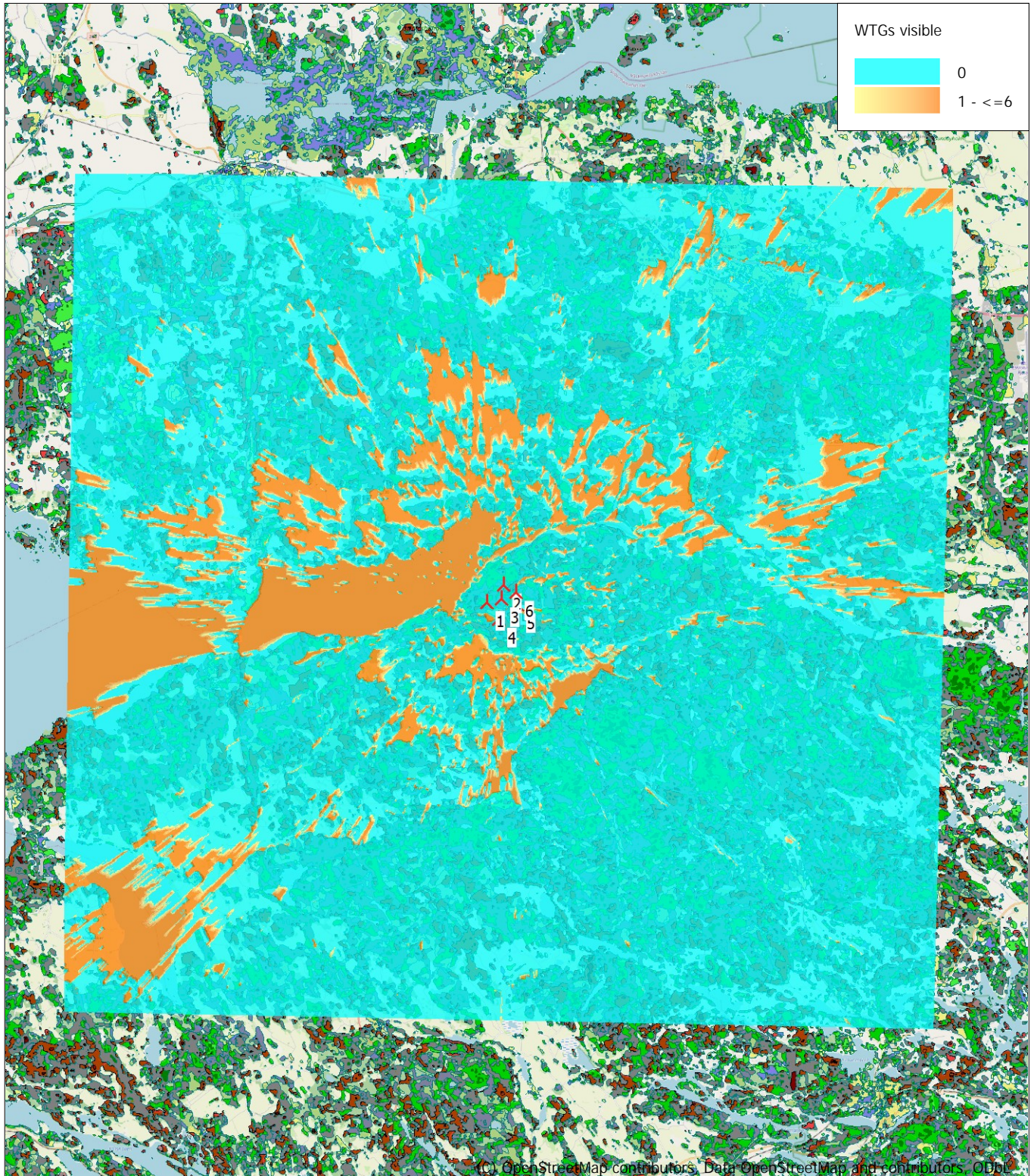
WTGs visible	Area [ha]	Area [%]
0	117 774	85,3
1	1 343	1,0
2	1 229	0,9
3	990	0,7
4	1 279	0,9
5	1 269	0,9
6	14 225	10,3

### WTGs

Valid	Manufact.	Type-generator	Power, rated [kW]	Rotor diameter [m]	Hub height [m]	Easting	Northing	Z [m]
1 Yes	VESTAS	V150-4.2 D174 StUvb-4 200	4 200	174,0	203,0	573 706	6 569 249	60,0
2 Yes	VESTAS	V150-4.2 D174 StUvb-4 200	4 200	174,0	203,0	574 433	6 569 978	65,0
3 Yes	VESTAS	V150-4.2 D174 StUvb-4 200	4 200	174,0	203,0	574 330	6 569 406	64,9
4 Yes	VESTAS	V150-4.2 D174 StUvb-4 200	4 200	174,0	203,0	574 249	6 568 523	60,0
5 Yes	VESTAS	V150-4.2 D174 StUvb-4 200	4 200	174,0	203,0	575 031	6 569 139	56,9
6 Yes	VESTAS	V150-4.2 D174 StUvb-4 200	4 200	174,0	203,0	574 983	6 569 695	65,0

## ZVI - Map Standard ZVI summary

Calculation: 221110\_Med\_skog



0 2,5 5 7,5 10km

Map: EMD OpenStreetMap , Print scale 1:250 000, Map center Swedish UTM 33-SWREF99 (SE) East: 574 578 North: 6 569 291

 New WTG

Grid step: 25 m - Eye height: 1,5 m - Calculation height: Total height